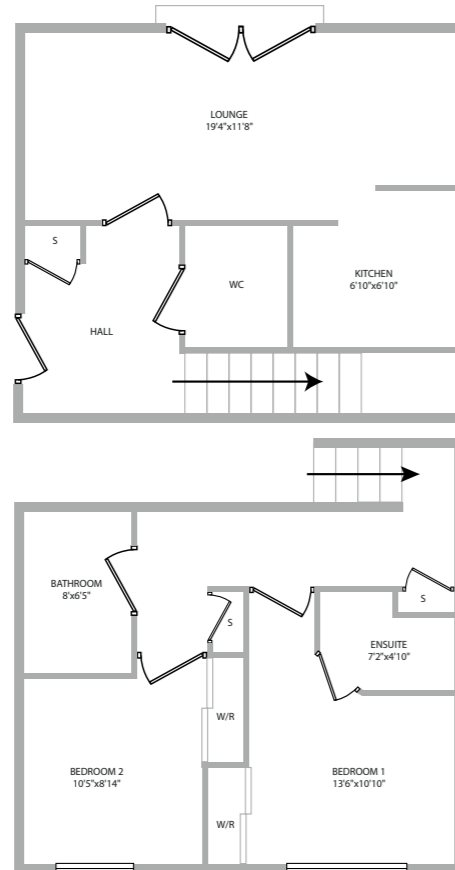




[www.caledoniaproperty.co.uk](http://www.caledoniaproperty.co.uk)

## Curle Street Whiteinch G14 0SA



Scotland's quality online estate agent with a High Street presence.

**Your local High Street office:** 2 Dumbarton Rd, Clydebank G81 1TU . **T.** 0141 952 2284 **E.** [clydebank@caledoniaproperty.co.uk](mailto:clydebank@caledoniaproperty.co.uk)

Please Note - Whilst this brochure has been prepared with care, it is not a report on the condition of the property. Its terms are not warranted and do not constitute and offer to sell. All area and room measurements are approximate only. No services, equipment or central heating have been tested and no warranty is given or implied that these are in working order or that they are connected to supply. Buyers are advised to see their own verification in this regard.



Curle Street **Whiteinch G14 0SA**



[www.caledoniaproperty.co.uk](http://www.caledoniaproperty.co.uk)

**CALEDONIA**  
ESTATE & LETTING AGENTS



## Curle Street Whiteinch G14 0SA



**Fixed Price** £110,000

**Viewing:**  
by appointment with  
Caledonia Property

**0141 952 2284**

**EPC:** Band C  
**Ref No:** C1339

Offering to the market this well presented second floor Duplex flat close to all local West End amenities, ideal for a professional couple or as a buy to let investment.

The accommodation comprises reception hall cloaks w/c, large lounge with French doors and Parisian balcony, fitted kitchen. The upper floor has two double size bedrooms, master with en suite shower room and family bathroom.

The property is further enhanced by gas central heating double glazing, security door entry and residents parking.

Whiteinch is located close to the heart of Glasgow's West and is within walking distance to all local amenities. Bus and rail links give regular access throughout the area, into Byres Road and Glasgow City Centre. The M8 motorway and Clyde Tunnel are both within easy reach providing additional links to Glasgow South Side, Glasgow Airport and surrounding areas.

