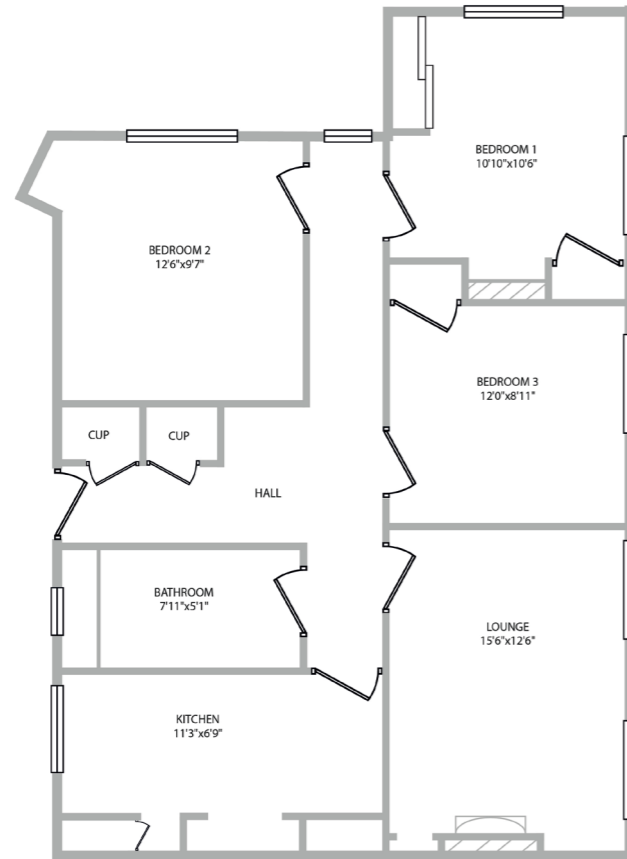




www.caledoniaproperty.co.uk

Portpatrick Road Old Kilpatrick G60 5JR



Scotland's quality online estate agent with a High Street presence.

Your local High Street office: 2 Dumbarton Rd, Clydebank G81 1TU . T. 0141 952 2284 E. clydebank@caledoniaproperty.co.uk

Please Note - Whilst this brochure has been prepared with care, it is not a report on the condition of the property. Its terms are not warranted and do not constitute and offer to sell. All area and room measurements are approximate only. No services, equipment or central heating have been tested and no warranty is given or implied that these are in working order or that they are connected to supply. Buyers are advised to see their own verification in this regard.



Portpatrick Road Old Kilpatrick G60 5JR



www.caledoniaproperty.co.uk





Portpatrick Road
Old Kilpatrick G60 5JR

Rarely available, well presented and exceptionally well proportioned ground floor flat situated within a sought after and convenient area. Accommodation comprises: Spacious lounge with fireplace, good sized fitted kitchen, three double bedrooms and tiled bathroom with over bath shower and screen. The subjects benefit from gas central heating with a combi boiler, double glazing, laminated flooring, a secured door entry system and communal gardens. Early internal viewing is advised.

The village of Old Kilpatrick enjoys a fantastic setting on the edge of the River Clyde with popular walks along the Forth and Clyde Canal. It offers a variety of local amenities including shops and bars and is very well connected to Glasgow via regular rail and bus links. Further excellent shopping facilities can be easily accessed in nearby Dumbarton and Clydebank. Main road connections are the A82 which puts Loch Lomond and the West of Scotland within easy reach. Erskine Bridge is only moments away. The popular Gavinburn Primary School is located within Old Kilpatrick.

Offers Over £74,995
Viewing:
by appointment with
Caledonia Property

0141 952 2284

EPC: Band C
Ref No: C1324

