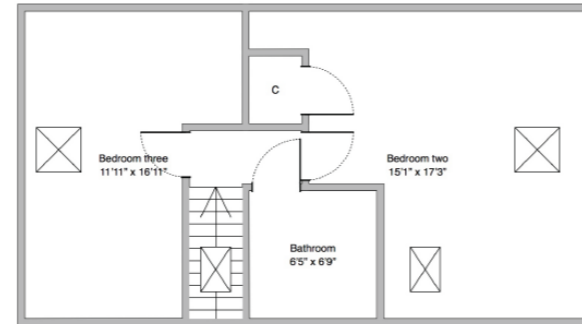
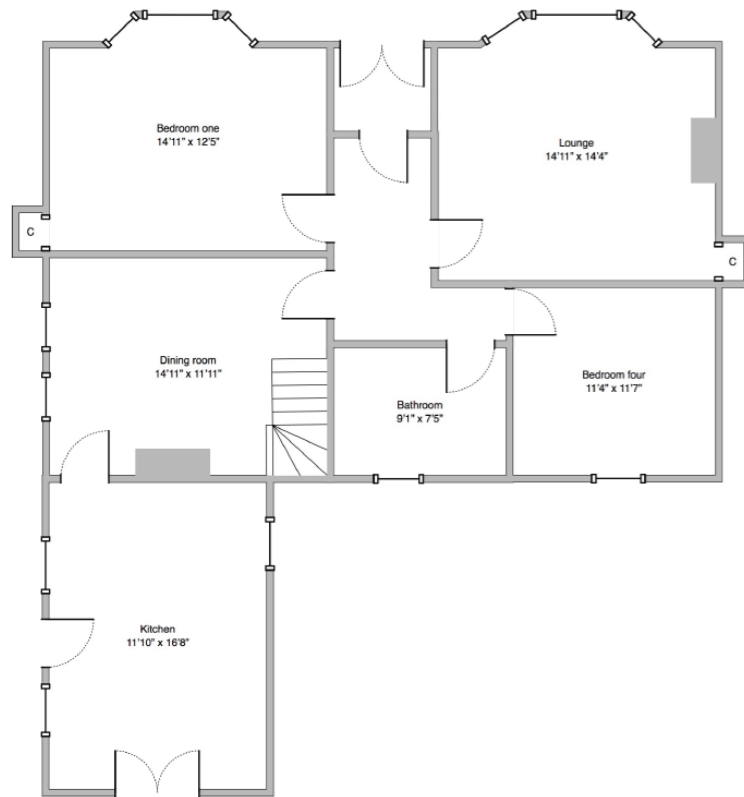




www.caledoniaproperty.co.uk

40 Gibson Street **Dumbarton G82 2HQ**



Scotland's quality online estate agent with a High Street presence.

Your local High Street office: 130 High Street, Dumbarton G82 1PQ. **T.** 0333 241 3333 **E.** dumbarton@caledoniaproperty.co.uk

Please Note - Whilst this brochure has been prepared with care, it is not a report on the condition of the property. Its terms are not warranted and do not constitute and offer to sell. All area and room measurements are approximate only. No services, equipment or central heating have been tested and no warranty is given or implied that these are in working order or that they are connected to supply. Buyers are advised to see their own verification in this regard.



40 Gibson Street **Dumbarton G82 2HQ**



www.caledoniaproperty.co.uk





40 Gibson Street
Dumbarton G82 2HQ



Viewing:
by appointment with
Caledonia Property

0333 241 3333

EPC: Band D
Ref No: DF1354

A fantastic extended traditional detached bungalow quietly positioned within cul-de-sac just off Round Riding Road. The property is situated within sizeable plot; the front and side laid to pattern imprinted concrete giving generous parking, the side leads to detached garage. The rear gardens are laid principally to lawn with elevated decked area.

The property itself has a traditional stone exterior with tiled roof, double glazed windows and doors throughout whilst warmth is provided by gas central heating.

Internal accommodation consists entrance vestibule, bay windowed lounge, separate dining room with staircase to upper, fantastic modernised family kitchen with generous floor standing and wall mounted units, space and plumbing for appliances, side door to driveway and double patio doors on to rear gardens. Downstairs family bathroom comprising low flush wc, roll top bath, wash hand basin and separate shower cubicle, there are two double downstairs bedrooms. Upstairs to bathroom and two further bedrooms.

The property is decorated in mostly neutral shades complemented by hardwood flooring and carpeting.

